

David Suzuki
Public School
45 Riverwalk Drive
Markham, L6B 0L9
905-209-0435

SUZUKI SOURCE



davidsuzuki.ps.yrdsb.ca

Volume 2

October 2014

Principal's Message



**Principal
Yvonne West**

**Vice-Principal
Shelley Anand**

**Admin Assistant
Gail Koidis**

**Secretaries
Rama Kanagarajah
Sunitha Krishnan**

**Superintendent
Dr. Lisa Walsh**

**Trustee
Juanita Nathan**

As expected, September has been a very busy month as we settled into the rhythm of being back at school. Our teachers and staff have worked extremely hard to ensure the students experienced a smooth transition back to school and to their new classes, and the children appear to be settled, happy and already working hard.

Thank you to all of our families who came out for Curriculum Night! It was wonderful to see so many of you and reassuring to know that you are all so committed to your children's academic success. Please keep in mind that we see you as our partner in your child's education and we appreciate the support you show the school, the teachers and, most importantly, your children.

As busy as we have been this month, our teachers have made the time to begin a wide array of extra-curricular activities. We have students already involved in cross-country, basketball, band, volleyball, and, for the first time at David Suzuki, floor-hockey! And, very importantly, our Eco Team has begun their work of keeping us environmentally responsible and our senior students have begun to campaign for executive positions on the Student Council. It takes a tremendous amount of teachers' personal time to run and support these activities. We really appreciate their commitment and dedication in doing so as this contributes to the children having an enriched schooling experience!

As always, we welcome your thoughts, comments and suggestions. Please don't hesitate to contact us if you have anything you would like to share.

Character Trait for October Responsibility

We are accountable for all our actions. We follow through on all our commitments.



*Yvonne West
Principal*

*Shelley Anand
Vice Principal*



Character Matters - Responsibility

September's focus was on Respect. We were pleased to see so many students around the school demonstrating respect on a daily basis. Congratulations to the following students for being selected this month:

Mrs. Neate	FTJSA	Calina, Rahavi, Ismail
Ms. Llewellyn	FTJSB	Ali, Akshaya, Hamza
Miss Halliday	FTJSC	Maha, Laksha, Zayden
Mrs. Gertsakis	FTJSD	Sharvein, Hannah, Anushka
Miss Eng	FTJSE	Indira, Joseph, Denai
Mrs. Hudspith	FTJSF	Telana, Caaviyan
Ms. Hall	FTS/1A	April, Daksh
Mrs. Barovier	1/2A	Angelina, Ashwin C.
Ms. Wood	1A	Aleesha, Vinoj
Mrs. Tsiampouris	1B	Roya, Ashwin
Mrs. Sambrook	1C	Ayra, Thibika
Mr. Hwee	2/3A	Archana, Issa
Miss Chan	2A	Dayla, Abisaan
Mrs. Clements	2B	Anoj, Devanshi
Miss Steele	2C	Veer, Adshaya
Mrs. Arumugam	3/4A	Tina C.
Mr. Kawnik	3A	Brian, Marissa
Mrs. Nedelkovski	3B	Praveen, Varsha
Mrs. Cooper	3C	Ajay, Riya



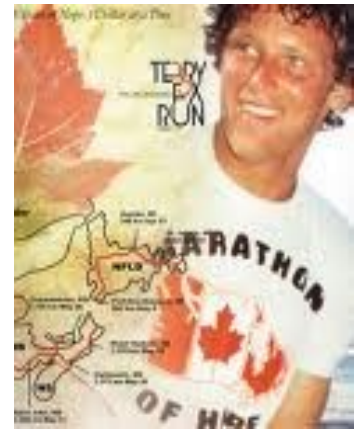
The character trait of the month for October is Responsibility. **“We are accountable for all our actions. We follow through on our commitments.”** We look forward to seeing the responsible and respectful students throughout the hallways and classrooms of David Suzuki P.S. Our character quote for the month is, **“Let the choices you make today be choices that you can live with tomorrow”.**



“Even if I don’t finish, we need other’s to continue. It’s got to keep going without me.” Terry Fox

“We are Terry Fox”

Our Terry Fox Run at David Suzuki was a success. The students ran hard and continued Terry Fox’s legacy of finding a cure for cancer. Thanks to all the parents, students and teachers for all their efforts and donations. Together, we raised a total of \$1600! Let’s continue our work next year to beat this year’s amount! Here’s to finding a cure for cancer!



David Suzuki Spooktacular Tech Fundraiser - October 31

More Details To Come...



School Bus Information

For school bus information including a "Late Bus Report" please go online to:

www.schoolbuscity.com

This site will give you bus stops, pick-up and drop-off times.

During inclement weather if the buses DO NOT run in the morning, they will NOT run in the afternoon. If they do pick up in the morning they WILL drop off in the afternoon.

Indoor Shoes



Indoor shoes with non-marking soles are essential to keep our classroom carpets and floors dry and clean. Please ensure that your child has a pair of shoes that can be left at school. Please also make sure that your child's name is inside the shoes. Children are not permitted to wear wet outdoor running shoes or boots in the classrooms. **Stocking feet are dangerous in the event of a fire drill.**

Reporting Your Child's Absence

You **MUST** call in your child's absence! We have a 24 hour absence reporting line (905-209-0435) When calling, clearly state and SPELL your child's name and their teacher's name as well. If we do not know where your child is we must call the police.

When calling in please indicate whether the absence is an illness, a medical appointment, an injury or a parent withdrawal (a day off). If it is an illness please indicate the following:

- Has a fever
- Stomach and intestinal symptoms (vomiting or diarrhea)
- Respiratory breathing cold symptoms (coughing, sneezing and congestion)



Thank you for your cooperation.

East Area Cross-Country Meet 2014

On Tuesday September 30th, 2014 67 students from David Suzuki Public School competed at the East Area Cross-Country Meet at Milliken Mills Park. The weather was perfect for competition and enjoyment!

Congratulations goes out to those members who qualified for the Regional Meet next week.

Adriana McAloney-Phillips (4H) placed 12th in Tyke Girls.

Ausha Sugirthan (5A) placed 13th in Atom Girls.

Sanjeiv Krishnanandan (7D) placed 8th in Intermediate Boys.

Alyssa McAloney-Phillips (8M) placed 11th in Senior Girls.

As well, the Intermediate Boys placed 3rd overall in their division. This has earned them a spot at regional's.

Sanjeiv Krishnanandan (7D)

Haran Ravindran (7R)

Matthew Persaud (7D)

Umen Sugirthan (7R)

Ishan Patel (7D)

Ali Premji (7D)

Miss.Blando, Mrs.Fenwick, Miss. Steele, and Mrs.Orr would like to congratulate the entire team on respectfully representing our school at the East Area Cross-Country Meet. They should be proud of their hardwork and achievements this season.



Cold Weather is on the Way



Please make sure your child(ren) dress(es) appropriately for the upcoming cold, winter weather. Warm boots, socks, pants, sweaters, coats, hats, mittens and scarves tucked inside the coat are very important for children of all ages to wear. Children will be expected to be outside during recess and lunch, so please make sure they are dressed for the weather.

As well, since we have approximately **780** students here at Suzuki, and many children wear the same brands, colours and sizes of clothing, it would be very helpful if your child's name could be printed in ink in boots and labels of clothing.

If your child has lost any items, please check our Lost and Found box just inside our front doors.

It is always a good idea to send extra clothing with younger students as accidents do happen or they get wet on the way to school with rain or snow.

Thank you.

School Council News

A great way for parents to be engaged in the school is through participation in School Council. School Councils support schools in a number of ways and are an important vehicle for parents to provide input into the decision-making that occurs at a school.

We are always interested in having new and diverse voices at the table and we invite all of our parents to attend meetings whenever you are able.

Our first Council meeting will be on Monday, October 6 at 6:30 P.M. At this meeting, we will be conducting elections to determine our new Executive Council members for the 2014-2015 school year.

The executive positions are :

Chair or Co-Chairs, Secretary, Treasurer, as well as the general Voting Membership.

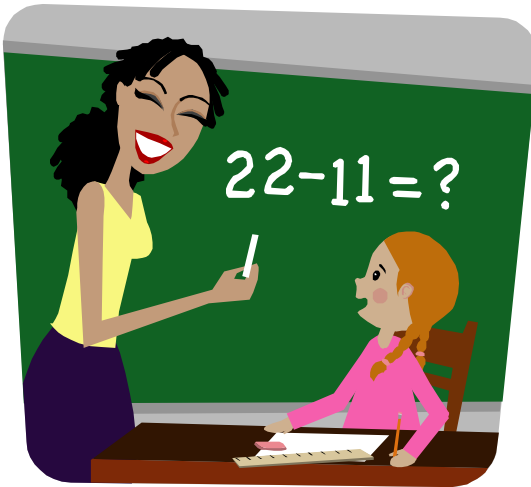
Please see the School Council insert for the descriptions of these roles. Please know that regardless of whether you wish to be a voting member or not, you are always welcome to attend a meeting.

Dropping Children

Off at School

Students who do not take a bus should be walking to school every day. Walking to school promotes a healthy lifestyle, encourages older students to be responsible for younger children, gives students an opportunity to socialize with friends, and much more. Fewer vehicles in front of the school reduces traffic congestion and lowers pollution levels in the schoolyard during drop-off times.

Teachers are on duty 15 minutes before the start of school in the morning (8:50 a.m.). Please ensure that your students do not arrive prior to this time as the yard will not be supervised and we want all of our students to be safe. Except in instances of severe weather conditions, students are not permitted to enter the school prior to the bell.



Curriculum Corner

Math is everywhere!

Understanding mathematics builds confidence. Support your child's learning by engaging in math in a supportive environment which encourages risk taking.

Just by comparing items around the home, your child can begin to understand some basic principles of measurement.

Some big ideas:

Sometimes we can estimate an amount.

The same object can be measured in different ways.

A measuring tool needs to be used the same way each time.

Try this:

Ask your child to estimate how many of a grocery item your family will need for the week.

Ask "Why do you think that amount will be needed?"

Gather boxes, packages and containers and ask your child to sort them or put them in some type of order (for example: Which holds more, less?)

Taken from :Doing Mathematics With Your Child- Kindergarten to Grade 6,

Ministry of Education

Nut FREE School

Please be aware that some of our students and staff have severe nut allergies. In some cases, the allergy is life threatening. In order to ensure their safety, David Suzuki is a **Peanut/Nut Free School** and therefore, we request that you do not send snacks or lunches to school which contain peanut or nut products.

If you would like to bring in birthday or holiday treats for your child`s class please be sure that they are NUT FREE. If the package does NOT state 'Nut Free' we cannot take a chance. Longo`s and some other stores carry 'Nut Free' mini cup cakes & other items. Tim Horton`s does not.

If your child has any serious allergies or medical condition that we should be aware of, please notify the office immediately.





ECO SCHOOL FOCUS

Litterless Lunches at David Suzuki

As an ecoschool, we are focused on making wise environmental choices to benefit our local and global community.

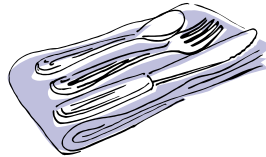
One of our first eco initiatives is to examine the waste that we are producing as a school and work really hard at reducing it. We have found that a great deal of our waste is coming from **lunches** and **snacks**. We would like all students and parents to make a serious effort to pack litterless lunches and snacks.

Here are some ideas to get you started:

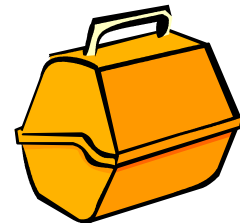
1) **Use reusable containers** instead of plastic wrap or plastic bags.



2) **Pack stainless steel forks and spoons** or wash and reuse your plastic ones over and over.



3) **Use a reusable lunch box or bag**, avoid plastic bags or paper bags.



4) **Pack your water or juice in a reusable container** and avoid juice boxes or disposable plastic bottles.

Suzuki Water Bottles on sale NOW in the office!



\$12.00

DID YOU KNOW?

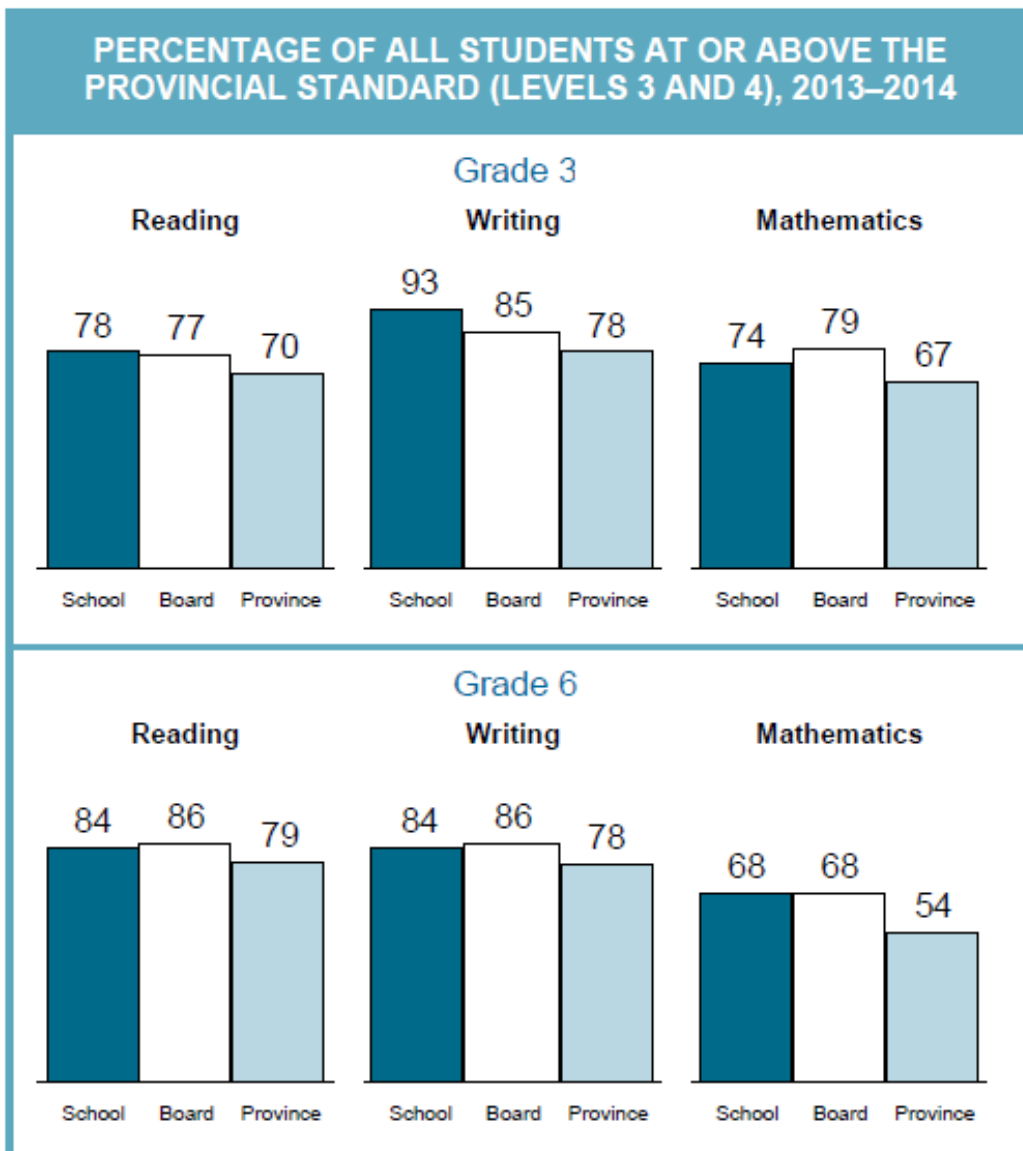
A school-aged child taking a typical Canadian disposable lunch to school will produce 67 lbs of waste per year and almost 900 lbs of waste by the time they finish grade 12. That's 20,000 lbs of garbage per year for an average size elementary school!!

We ALL need to work together to make our school a greener place!

EQAO - School Results:

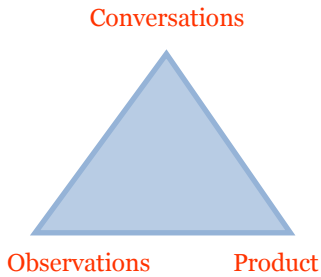
We have received the 2013-2014 results of the Provincial Assessments of Reading, Writing and Mathematics, Primary Division (Grades 1-3) and Junior Division (Grade 4-6). As you can see from the graphs below, our David Suzuki Grade 3 and 6 students performed well, scoring, in all cases, above the Provincial averages. Please keep in mind that the student contextual data differs from year to year, e.g. the number of exempt students, the number of students identified with special needs, the number of ELL students, etc., and specific context pieces do impact the overall results.

Our staff will be analyzing the results and disaggregating the data and we will use this information to help us with our plans for overall school improvement. The EQAO testing results are a snapshot of achievement and is used along with other school-based assessments to plan for improved student achievement. Ongoing classroom assessments remain a fundamental method of determining each student's strengths and needs as we plan for each student's success.



Assessment and Evaluation ... *From The Teacher's Desk*

A common question from parents is, "How is my child's learning assessed?" Below is an excerpt from a newsletter discussing assessment and evaluation sent home by Kathleen Benson, one of our Grade 6 teachers, which helps to answer that question:



Evidence of Student Achievement for Evaluation:

Evidence of student achievement for evaluation is collected over time from three different sources – observations, conversations, and student products. Teachers are sure to assess multiple sources of evidence which increases the reliability and validity of the evaluation. Observations and conversations are extremely important tools of assessment, as teachers are able to discuss a student's level of understanding, observe strategies they use, and assess a student's ability to communicate their learning. Products may take the form of quizzes or tests, assignments, projects, etc.

Student Achievement

Student achievement of the overall curriculum expectations is evaluated in accordance with the achievement chart (outlined more explicitly in the Growing Success document). The Achievement Chart identifies four levels of achievement (level 1, 2, 3, and 4). Level 1 represents achievement that falls much below the provincial standard; level 2 represents achievement that approaches the provincial standard; level 3 represents the provincial standard; and level 4 identifies achievement that surpasses the provincial standard. It's important to note that a **level 3 indicates that a student demonstrates the specified knowledge and skills with considerable effectiveness**, and parents can be confident that their children will be prepared for work in subsequent grades.

The achievement chart that we use also outlines the subsets of knowledge and skills that define a student's learning. They identify the aspects of student performance that are assessed and/or evaluated, and serve as a guide to what teachers look for. The four categories are: Knowledge and Understanding, Thinking, Communication, and Application.

As mentioned above, your son or daughter may bring home work that displays a level, grade, and/or percentage mark. The conversion chart below shows how the four levels of achievement are aligned to letter grades and percentages.



Achievement Level	Letter Grade	Percentage Mark/ Range
1-	D-	50-52%
1	D	53-56%
1+	D+	57-59%
2-	C-	60-62%
2+	C+	67-69%
3-	B-	70-72%
3	B	73-76%
3+	B+	77-79%
4-	A-	80-86%
4	A	87-94%
4+	A+	95-100%



MILK & PIZZA

Our milk and pizza programs will be up and running shortly, please be sure to promptly return all forms and ensure that your child's name is printed on the cheque.

If you are interested in volunteering with the pizza lunch program please feel free to contact us at the office. We look forward to working with you!



Upcoming Dates

Oct. 6	School Council 6:30
Oct. 9	Hep B & HPV vaccinations (gr. 7 & 8)
Oct. 13	Thanksgiving (no school)
Oct. 20 & 21	Bus Safety
Oct. 27	P.A. Day (no school)
Oct. 29	Photo Re-take Day

Traffic Loop

Parents familiar with morning traffic know just how congested traffic can be in the morning in front of the school and in the drop off loop in the parking lot. **We strongly encourage students to walk to school.** However, if you must use the loop in the morning, please **be patient, drive slowly and be careful.** **The loop is for drop off only, not parking. Parents should not leave the car or wait in the loop at any time.**

Once dropped off, students should proceed directly to the schoolyard or Kindergarten fenced area. There are two lanes of traffic in the loop. Children should not be exiting the vehicle on the driver side between the two lanes of traffic as this is very dangerous. Your child should be exiting in the lane closest to the school and exiting out the passenger side of the vehicle so that he/she is stepping on to the sidewalk.

If you wish to park and walk your child to the schoolyard, **please park on a side street.** The Town of Markham parking enforcement could be making visits to the school area and we do not want any of our families being ticketed for parking illegally in the loop or in handicapped parking spots by the loop.

Child Safety!

Parents are NOT permitted to wander through the school. This is for the safety of the children. When dropping off or signing out students please report to the office. Please ensure all other caregivers are aware of this procedure.



Environmental Corner



Here at David Suzuki, we encourage everyone to care for the environment. Whether it's packing litter-less lunches or using reusable water bottles, being eco-friendly is easy! We also highly encourage you to carpool or walk to school which will reduce the number of cars on the roads. Cars send out tons of pollution which is harming our environment and polluting our air day by day. Walking to school can help resolve this problem very easily. In fact, this October 8th is "Walk to School Day" and we want all families and community members to participate in this eco event. So, the next time you drop your child off to school, always remember to think eco!